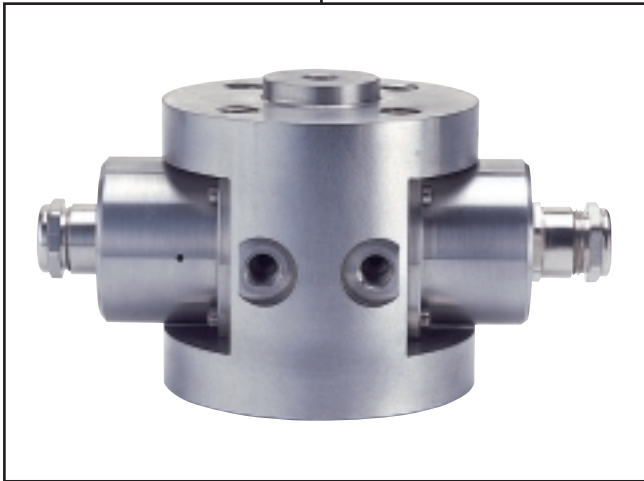


Type B- Liquid Flow Cell For Fast Loop Installations



Specac's Type B optical flow cell is designed for sampling process liquids in transmission mode. It is the ideal choice for installation on process by-pass loops installed directly on the plant, allowing for real-time remote monitoring. Superior optical design, state-of-the-art sealing technology and ruggedised construction are combined with precision manufacturing to ensure many years of reliable, high performance.

Temperatures as high as 280°C and pressures as high as 1500 P.S.I. can be handled with the standard cell.

A choice of materials, including Stainless Steels and Hastelloy®, are available to ensure materials compatibility with a wide range of corrosive fluids.

Optical designs can be configured for near infrared (NIR) or UV-Visible regions, and further optimisation is available for specific areas of the spectrum.

Twin perfluoroelastomer seals are incorporated to guard against the unlikely event of primary

seal failure.

Windows can be Gold diffusion bonded to provide the highest seal integrity under the harshest of process conditions, increasing the temperature rating to 400°C.

Optional seal leak warning ports can be incorporated for additional process security, and cells can be specified with a cleaning port to allow easy cleaning of the windows without the need to remove the cell.

A wide range of design configurations are available to allow exact matching with client's process requirements

Standard Specification

| | |
|-------------------------|--------------------------------------------------------------------------------|
| Standard optical range | Specify NIR or UV-Visible operation <i>(contact us for extended ranges)</i> |
| Pathlength | 0.5mm - 10mm |
| Window material | Sapphire |
| Body material | Stainless Steel 316, Hastelloy® <i>(others available upon request)</i> |
| Maximum temperature | 280°C <i>(up to 400°C with Gold diffusion bonding)</i> |
| Maximum pressure | 1500 P.S.I. |
| Seals | Choice of perfluoroelastomers |
| Cell bore | 10 mm <i>(larger available on request)</i> |
| Standard fibre diameter | 600µm <i>(contact us for other options)</i> |
| Fibre fitting | SMA |
| Pipe fitting | Range of ANSI |
| Thermocouple well | 1/8" B.S.P. |

Optional Features

Gold diffusion bonded windows
Primary seal leak ports
Window cleaning ports
Protective hoods for fibre connections (I.P. 65 rated)

Advantages

- Allows process control and monitoring
- Cost savings due to process optimisation
- Allows sampling of hazardous process streams in complete safety
- Reproducible sampling

Applications

- Oil refining
- Petrochemicals
- Chemicals
- Pharmaceuticals
- Food
- Pilot plants

To request a quotation for a Specac process cell, or for further information, contact the Specac Sales Department on +44 (0)1689 873134, or e-mail your enquiry to sales@specac.co.uk

**THE SOLUTION IS SPECAC
WHAT'S THE PROBLEM?
www.specac.com**

SPECAC LIMITED,
River House, 97 Cray Ave, St. Mary Cray,
Orpington, Kent BR5 4HE, U.K.
Tel : +44 (0)1689 873134
Fax : +44 (0)1689 878527
www.specac.com
Registered No. 1008689 England

SPECAC INC.,
500 Technology Court, Smyrna,
GA 30082-5211, U.S.A.
Tel : +1 770 803 1106
Fax : +1 770 319 2488
Toll Free : +1 800 447 2558
Specac is part of Smiths Group plc